



Thornleigh
Salesian College

YEAR 7, 8 & 9 LEARNING GUIDE



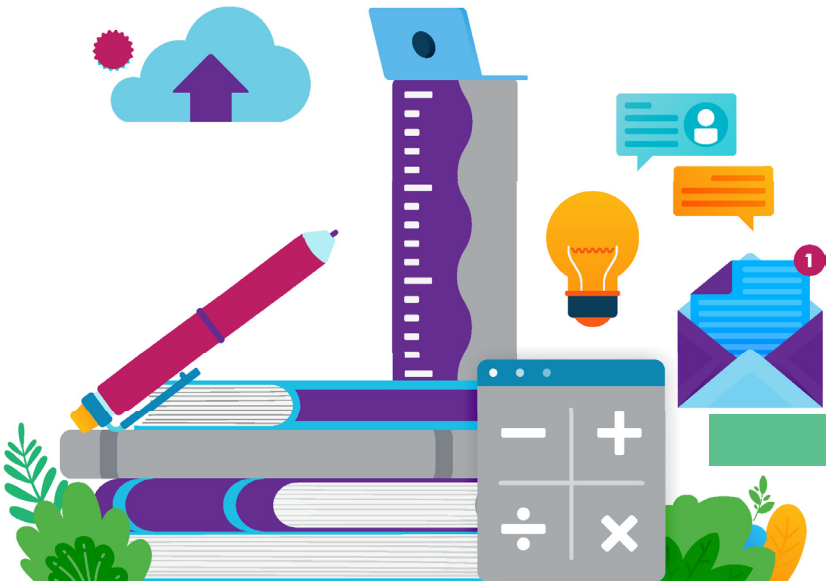
Week commencing **15th June 2020**

About the Learning Guide

This learning guide is designed to give you an overview of your package of compulsory school education for the remainder of the summer term.

From week commencing Monday 15th June, each week you will be offered:

- Live online Q&A support hubs in every subject
- Directed digital learning in all subjects – this is a continuation of the learning that you are doing already.



1. Live online Q&A support hubs

All subjects will provide one live online Q&A support hub per week.

Year 7 and 8 will attend the same Q&A support hub. Year 9 will attend their own.

The Q&A support hub will provide a chance for you to ask any questions about learning, receive precise guidance about learning and benefit from some teacher feedback.

You need to submit any questions that you have about the set learning in advance of the Q&A support hub. This will allow the link teacher to prepare.

Here are the email addresses for you to submit your questions to:

	Subject / Course	Email address
Year 7, 8 and 9	English	EnglishQuestions@thornleigh.bolton.sch.uk
	Maths	MathsQuestions@thornleigh.bolton.sch.uk
	Science	ScienceQuestions@thornleigh.bolton.sch.uk
	RE	REQuestions@thornleigh.bolton.sch.uk
	Geography	GeographyQuestions@thornleigh.bolton.sch.uk
	History	HistoryQuestions@thornleigh.bolton.sch.uk
	Spanish	SpanishQuestions@thornleigh.bolton.sch.uk
	Art	ArtQuestions@thornleigh.bolton.sch.uk
	Music	MusicQuestions@thornleigh.bolton.sch.uk
	Design Technology	DesignTechnologyQuestions@thornleigh.bolton.sch.uk
	Home Technology	HomeTechnologyQuestions@thornleigh.bolton.sch.uk
Computer Science	ComputerScienceQuestions@thornleigh.bolton.sch.uk	
Year 9	Business	BusinessQuestions@thornleigh.bolton.sch.uk
	Construction	ConstructionQuestions@thornleigh.bolton.sch.uk
	Graphics	GraphicsQuestions@thornleigh.bolton.sch.uk
	Photography	PhotographyQuestions@thornleigh.bolton.sch.uk
	Dance	DanceQuestions@thornleigh.bolton.sch.uk
	Health and Social Care	HealthSocialCareQuestions@thornleigh.bolton.sch.uk
	IT	ITQuestions@thornleigh.bolton.sch.uk
	Child Development	ChildDevelopmentQuestions@thornleigh.bolton.sch.uk
	GCSE PE	GCSEPEQuestions@thornleigh.bolton.sch.uk
BTEC Sport	BTECSportQuestions@thornleigh.bolton.sch.uk	

Live online Q&A support hubs will:

- Take place every day
- One subject will begin at 2pm and another subject will begin at 2:30pm
- Last 30 minutes each
- Happen on Zoom. You do not need a Zoom account – you will be able to join each lesson by clicking a hyperlink.

Each Sunday, you will be informed when your live online Q&A support hubs are happening on Show My Homework. The joining details will be shared on Google Classroom. It's really important to us that you are safe and secure during a live online Q&A support hub, so we have set some learning expectations. These are on the next page.

Expectations for live online lessons

By joining a live online lesson, you are agreeing to meet the following expectations.

When I participate in live online lessons I will:

- Make sure that I am muted, unless the teacher instructs otherwise
- Decide to turn my camera on or off
- Use a room that has a plain and appropriate background where possible
- Respect all participants
- Speak politely to all participants
- Have something to write with and on
- Not eat or drink during a lesson
- Only use the 'chat' feature with the teacher to ask/answer questions
- Use 'raise your hand' feature if I want to ask a question verbally
- Arrive on time (1:55pm), as the teacher may 'lock' the room if I am late.
- Dress appropriately (for example, no pyjamas or anything revealing)
- Use the hyperlink shared by my teacher on Google Classroom to join the lesson. You should not require a Zoom account to access the live online lessons.
- Not try to re-join the meeting once it has ended.

NOTE: All live online lessons will be recorded by the teacher for safeguarding purposes.



2. Direct digital learning

Each Sunday, Show My Homework will be updated with directed digital learning to be studied each week in every subject.

This directed digital learning is mostly accessed on Google Classroom.

Directed digital learning should include the following from every subject that you study:

- One narrated virtual lesson. Your class teacher will record themselves 'teaching' a lesson. This will last around 20-30 minutes.
- In addition to the narrated virtual lesson, your class teacher will also set some directed digital learning for you to complete independently. These directed independent digital learning tasks should last you one week. You will be provided with some learning resources to help you complete this. All completed work should be submitted.

Example timetables for how you might organise your directed digital learning are on the next page.



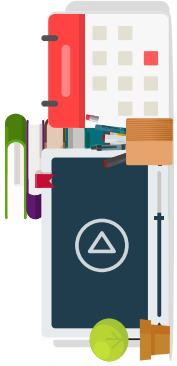
3. Example timetables for organising your directed digital learning

Year 7 and 8

Example timetable	Monday	Tuesday	Wednesday	Thursday	Friday
Directed digital learning WEEK 1 (20-30 mins per subject)	1.Maths 2.Science 3.History	1.English 2.RE 3.Maths 4.Design Technology	1.Science 2.English 3.Geography	1.Maths 2.RE 3.Spanish	1.English 2.Science 3.Computer Science
Directed digital learning WEEK 2 (20-30 mins per subject)	1.Maths 2.Science 3.History	1.English 2.RE 3.Maths 4.Food Technology	1.Science 2.English 3.Geography 4.Music	1.Maths 2.RE 3.Spanish	1.English 2.Science 3.Art
Live online Q&A support hub No.1 at 2pm	YES	YES	YES	YES	YES
Live online Q&A support hub No.2 at 2:30pm	YES	YES	YES	YES	YES

Year 9

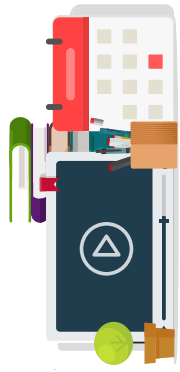
Example timetable	Monday	Tuesday	Wednesday	Thursday	Friday
Directed digital learning (20-30 mins per subject)	1.Maths 2.Science - Bio 3.Geography or History	1.English 2.Maths 3.Option subject 1 learning	1.Science-Phys 2.English 3.Option subject 2 learning	1.Maths 2.Science-Chem 3.RE *Online virtual assembly on YouTube	1.English 2.RE 3.Tutorial PPT
Live online Q&A support hub No.1 at 2pm	YES	YES	YES	YES	YES
Live online Q&A support hub No.2 at 2:30pm	YES	YES	YES	YES	YES



Create your own timetable

- Year 7 & 8

Timetable	Monday	Tuesday	Wednesday	Thursday	Friday
Directed digital learning WEEK 1 (20-30 mins per subject)					
Directed digital learning WEEK 2 (20-30 mins per subject)					
Live online Q&A support hub No.1 at 2pm					
Live online Q&A support hub No.2 at 2:30pm					



Create your own timetable

- Year 9

Timetable	Monday	Tuesday	Wednesday	Thursday	Friday
Directed digital learning (20-30 mins per subject)					
Live online Q&A support hub No.1 at 2pm					
Live online Q&A support hub No.2 at 2:30pm					